

CERTIFIED LAND CORNER RECORDATION

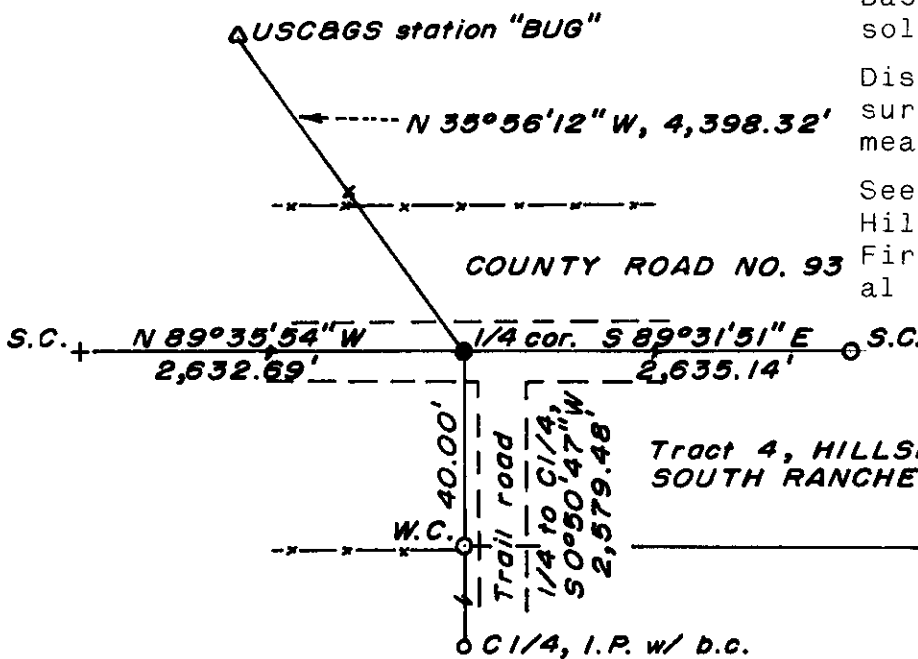
DESCRIPTION OF CORNER EVIDENCE FOUND, AND ORIGINAL RECORD (If known)

LOCATION Found 6" x 6" x 16" sandstone, in place, in center of road.
 1/4 S. 35 G.L.O. record - Set Limestone 16 x 8 x 4 for 1/4 Sec. Cor.
 S. 2
 T. 14N., R. 64W.
 T. 13N.
 6th P.M.

DESCRIPTION OF MONUMENT AND ACCESSORIES ESTABLISHED TO PERPETUATE THE ORIGINAL LOCATION OF THIS CORNER:

At the corner: Set a 5/8" dia. x 24" long rebar in center of road.
 Accessories: A 1 1/2" dia. x 30" long (concrete-filled) iron pipe with brass cap bears S 0° 50' 47" W, 40.00 feet distant (Set as Witness Corner)
 Left stone as memorial at Witness Corner.

SKETCH, WITH COURSE AND DISTANCE TO ADJACENT CORNER IF DETERMINED IN THIS SURVEY.
 (May Sketch or Paste Reproduction on Reverse Side.)



Basis of Bearing - By solar observation.

Distances based on measurements by electronic means.

See official plat of Hillsdale South Ranchettes, First Filing, for additional information.

1" = 40'

Brass cap set 6" above surface.

Brass cap stamped:

T. 14N. R. 64W.
 1/4 S. 35
 S. 2 W.C.

LS 519 T. 13N. 1977



I, R. L. Hudson certify that I have carefully performed ~~or reviewed~~ the work done on the diagrammed corner as reported on this recordation form and approve the same.

R. L. Hudson Wyoming L.S. No. 519
 Signature of Surveyor Registration No.

STATE OF WYOMING,
 Office of Clerk and Recorder,
 County of Tarasimie

This "corner record" was filed for record on the 18 day of July, 1977, was noted on the cross-index plat and is assigned page No. _____, in book No. _____

Janet C. Whitehead
 County Official

Cross Index No. _____	T. _____	R. _____	Mer. _____
<u>A-19</u>	T. <u>14</u>	R. <u>64</u>	Mer. _____
<u>A-19</u>	T. <u>13</u>	R. <u>64</u>	Mer. _____
_____	T. _____	R. _____	Mer. _____
_____	T. _____	R. _____	Mer. _____
_____	T. _____	R. _____	Mer. _____
_____	T. _____	R. _____	Mer. _____

446774

Photographed _____
Indexed SP
Posted _____
Assessor _____